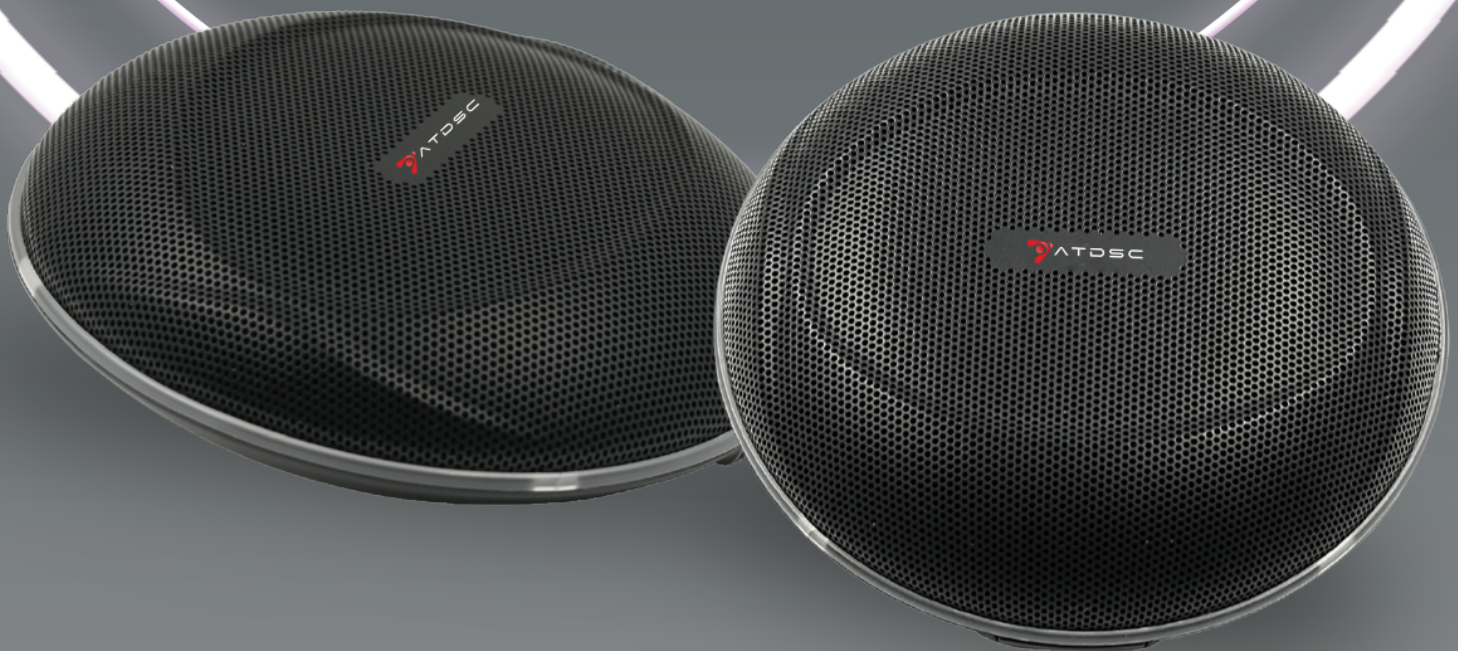


CEILING-ARRAY

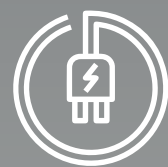
OMNI-DIRECTIONAL MICROPHONE



Pick-up
Distance 6M



Power
Consumption 1.5W



Power Supply
DC 12V

Technical Specifications

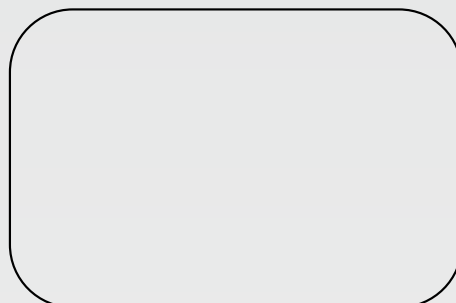
Ceiling Array Omni-Direction Microphones consist of 6 Silicon Microphones. Crystal Clear voice with Unique Digital Signal Processing algorithms, having Echo Cancellation (AEC), Noise Cancellation (ANC), Beamforming (BF), and Reverb (De-reverb), ensuring that speaker has the freedom to move or sit in one place, still achieving high-quality sound.

- Perfect for sound processing with multiple pickup sources (Pickup distance is 6 meters) with interactive occupants. High-quality pickup and high-quality interactive echo cancellation.
- Noise cancellation: Effectively suppresses environmental noises within the pickup radius, giving the freedom to the occupants to move freely, stand, sit and make any other movements that do not affect the sound quality.
- Noise cancellation: Effectively suppresses User-friendly and very easy to install. Plug and play with no parameters to adjust.
- Works in stand alone manner without DSP as it has built-in AEC.

Technical Specifications

| | |
|---------------------------|---------------------------------------------------------------------------|
| Model | CAOD 6 |
| Microphone | |
| Pick-up distance | 6M |
| Built in algorithms | AFC,AEC,Reverb |
| Transmission format | Digital Signal |
| Microphone Array | Omni direction circular with 6 Microphones inbuilt |
| Angle of sound source | 360° |
| Positioning Accuracy | ±10° |
| Built in algorithms | AGC,ANC,BF |
| Signal to Noise Ratio | ≥65dB |
| Dimensions | >123x 30mm |
| Operating voltage | DC 12V |
| Maximum power consumption | 1.5W |
| Sensitivity | (94dBSPL@1 kHz),-26dBFs |
| Frequency response | 20Hz-16kHz |
| Sampling rate | 48k |
| Power supply | DC12v |
| On & Off Button | 1 |
| Communication Box | |
| Ports | RJ 45 x 2 |
| Remote Out | Mic balanced level with -10dBV |
| Remote In | Mic balanced level with -10dBV |
| Balanced Out | Digital Signal Processor connectivity with Mic balanced level with -10dBV |
| Power | Pin for Power adapter 12V |

AVAILABLE THROUGH PAN INDIA DISTRIBUTOR & DEALER NETWORK



www.atdscindia.com