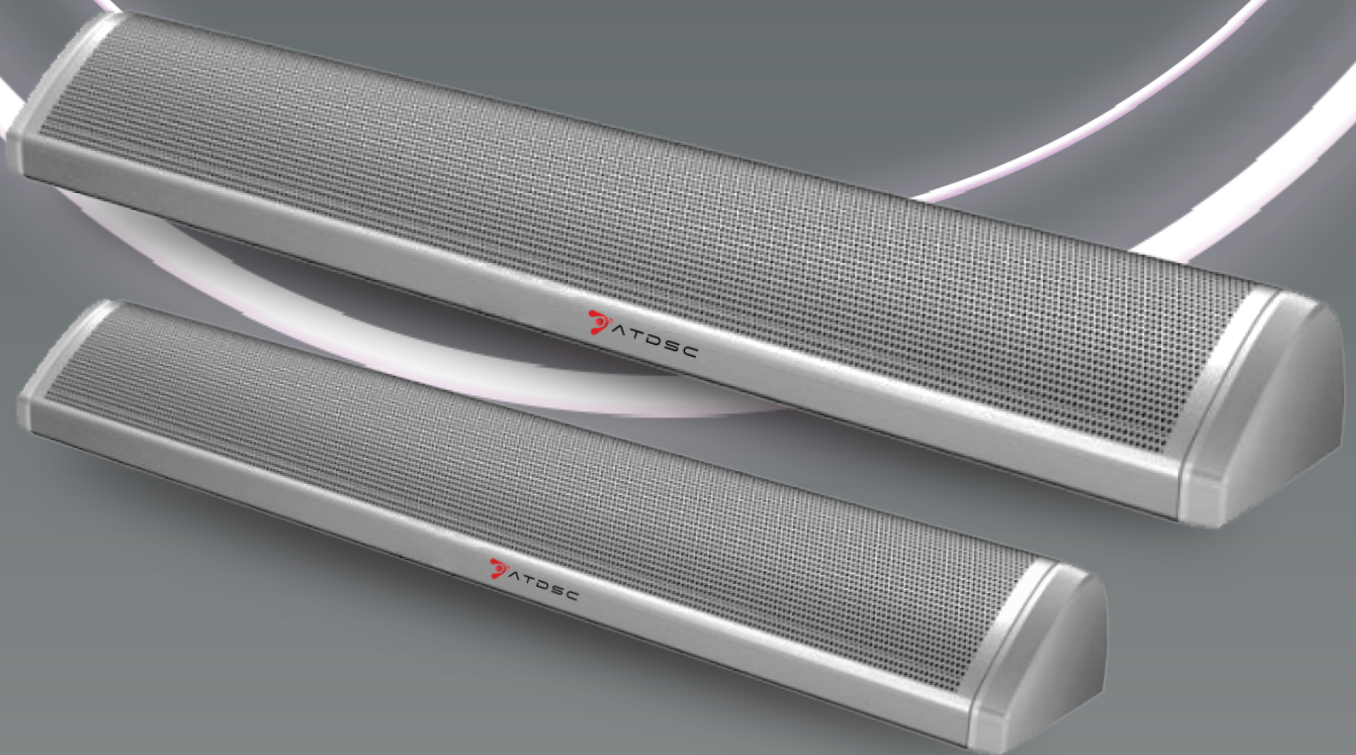


CEILING-ARRAY

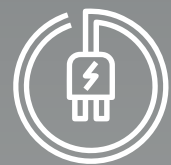
UNIDIRECTIONAL MICROPHONE



Pick-up
Distance 5M



Power
Consumption 1 W



Power Supply
48 V

Technical Specifications

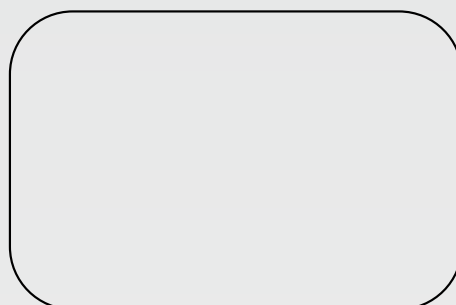
Ceiling Array Unidirectional Microphones consist of 5 Capacitor Microphones. Crystal Clear voice with protection from Overload, Overcurrent & High Temperature, ensuring that the speaker has the freedom to move or sit at one place, still achieving high quality sound.

- Perfect for sound processing with multiple pickup sources (Pickup distance is 5 meters) with interactive occupants. High-quality pickup and high-quality interactive echo cancellation.
- Noise cancellation: Effectively suppresses environmental noises within the pickup radius, giving the freedom to the occupants to move freely, stand, sit and make any other movements that do not affect the sound quality.
- Dust-proof mesh cover provides longevity and works flawlessly for years.
- High sensitivity & strong directional sound pick up reduces the feedback and is very useful for Recordings, In Lecture Halls for Online Teaching
- Ideal for a small conference room with a clutter-free table and environment for Video Conferencing with clear sound pick up from any corner.
- Noise cancellation: Effectively suppresses environmental noises within the pickup radius, giving the occupants the freedom to move freely, stand, sit and make any other movements that do not affect the sound quality
- User-friendly and very easy to install. Plug and play with no parameters to adjust.
- Works in stand alone manner without DSP.

Technical Specifications

Model	CAUD 5
Microphone	
Pick-up distance	5M
Microphone Array	Uni direction with 5 Microphones inbuilt
Microphone type	Capacitor
Channel Separation	100 dB
Dynamic Range	95 dB
Angle of sound source	180°
Positioning Accuracy	±10°
Directivity	Directional Broadband
Transmission format	Digital Signal
Built in algorithms	AGC,ANC,BF
Signal to Noise Ratio	80dB
Dimensions	>123x 30mm
Operating voltage	DC 12V
Maximum power consumption	1 W
Sensitivity	-10dB
Frequency response	20Hz-18kHz
Sampling rate	48k
Power supply	48V Phantom Power Supply
Boost range	113 db SPL @1kHz
Output interface	3pin Phoenix terminal balanced output
Ceiling Mount	M6 Screw compatibility to hang from Ceiling or wall.

AVAILABLE THROUGH PAN INDIA DISTRIBUTOR & DEALER NETWORK



www.atdscindia.com