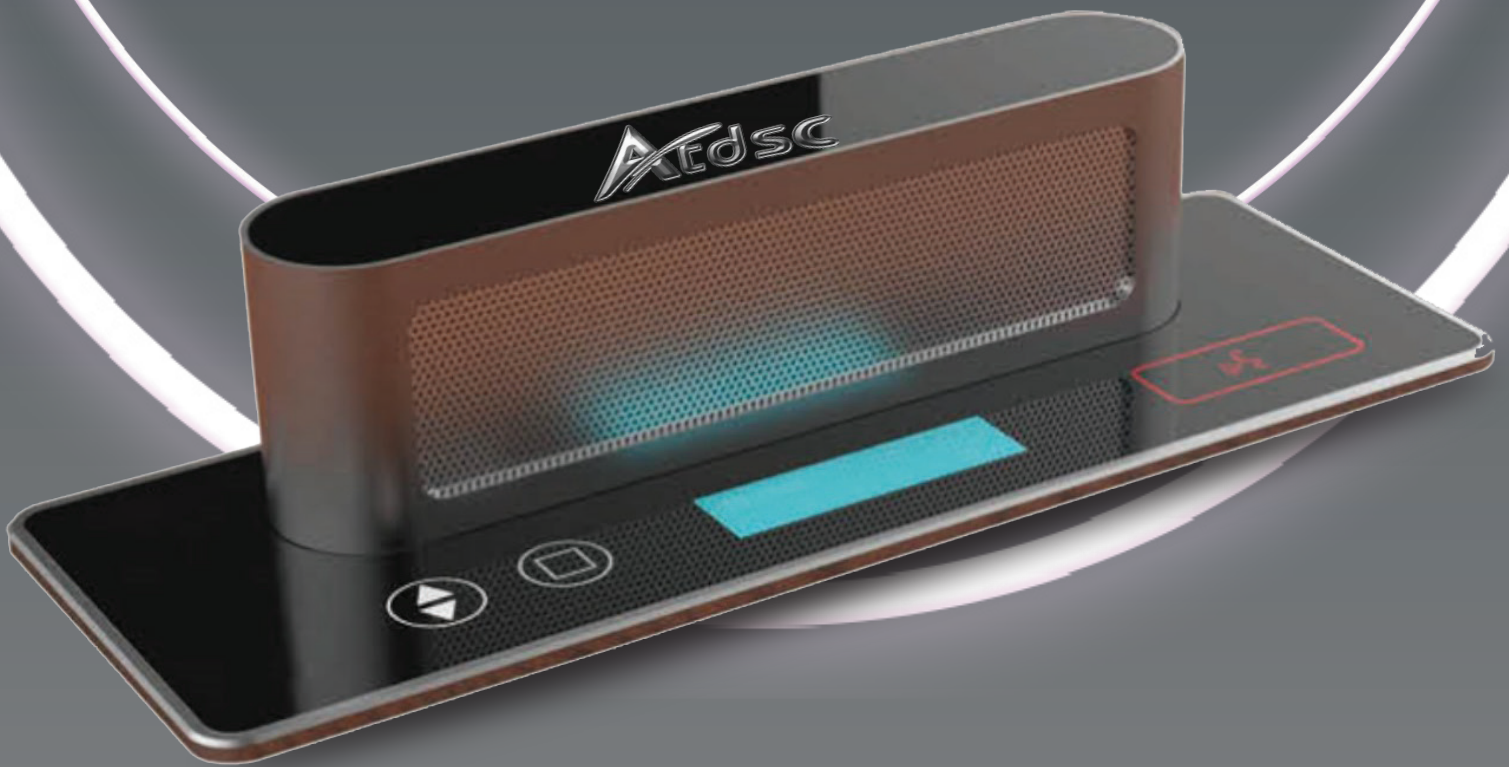


**ELITE** SERIES **MOTORIZED**  
**RETRACTABLE**  
**MICROPHONE**



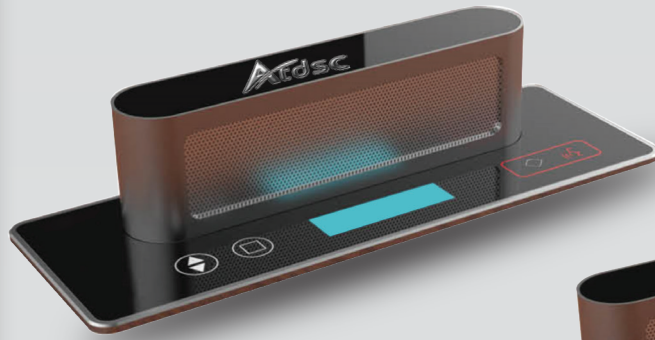
Chairman and  
**Delegate Unit**



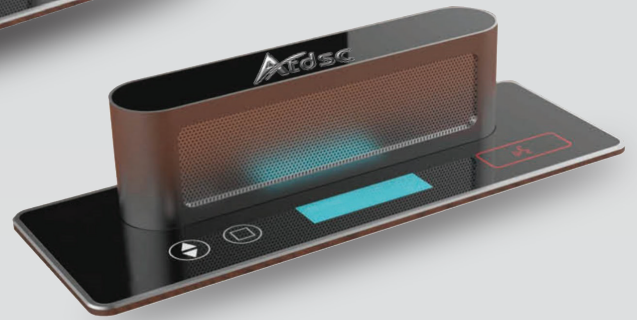
Look-at-Me  
**Audio Tracking Built-in**



Daisy Chain  
**Loop-in Loop-Out**



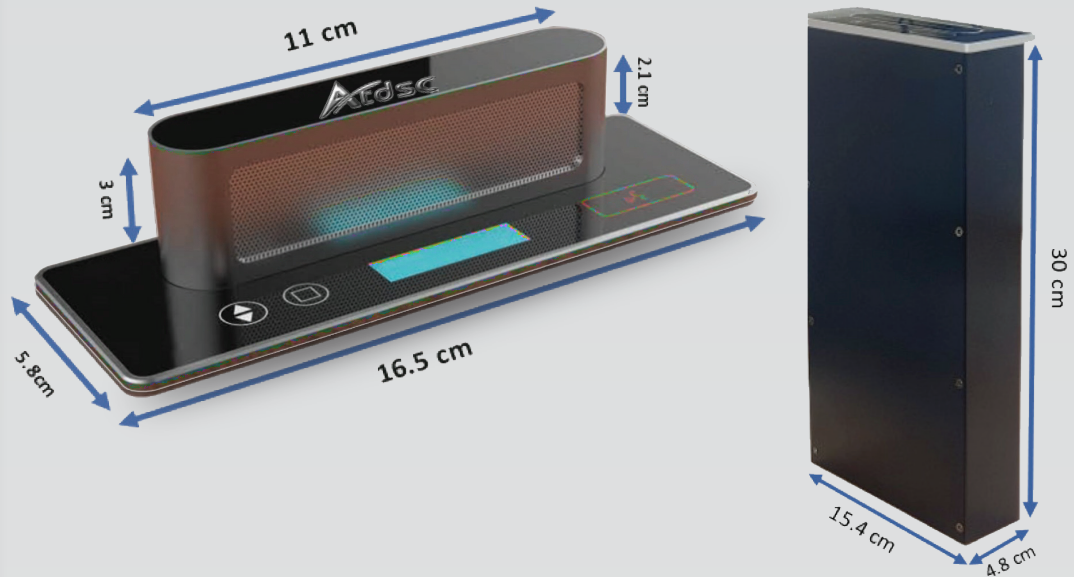
**Chairman Unit**



**Delegate Unit**

## Features

- Advanced and stable "IRIN" chip and DSP/DDOV Digital Conference technology to realize digital signal transmission and processing.
- Built-in 59.7mm gold-plated capacitive 5 pickup heads using lateral sound source and Angle array technology to effectively pick up every detail of the sound.
- The microphone having high-density acoustic interference holes with a diameter of 0.4mm, accurately calculates the aperture and spacing. Further, it combines interference correction technology to accurately control the pickup details, effectively improving the sensitivity of human audio frequency response range pickup.
- Unique cavity and integrated shape sound picking steel mesh design, accurately controls the sound picking Angle, avoiding acoustic feedback and howling.
- The first mini-embedded motorized lifting control system with digital intelligent synchronous positioning recognition technology for smooth, stable lifting and accurate positioning.
- High sensitivity sound pickup design with built-in automatic gain AGC function, effective sound pickup distance up to 100cm.
- FTC334C professional capacitive touch-sensitive button processing chip with virtual touch button.No mechanical switch sound ensuring smooth and no noise conference.
- All Zinc-aluminium alloy bodies with embedded glass panels are waterproof and dustproof which prevents damage from liquids.



- Equipped with a 128×32 mm high brightness OLED display, it displays the ID address of the unit, speaking time, volume, etc.
- The Time function supports a dynamic display of speaking time allowing the user to set the countdown and time of speaking.
- High-fidelity lossless audio transmission technology with 48KHz audio sampling frequency.
- It ensures sensitive pickup with clear speech having frequency response up to 30Hz-20KHz.
- Three colour indicator displays: Red-Normal, Green-VIP, Yellow-Numbered units.
- Intelligent audio detection function senses the distance between two adjacent units and if it's close with audio automatic anti-phase attenuation it eliminates whistling.
- Daisy Chain connection with professional 8-core or CAT5 cable wire adopts full-line aluminum foil, and waterline shielding, effectively avoiding and preventing line electromagnetic interference.
- Look-At-Me built-in which controls the camera to track the active speaker. Supports Multi multi-camera tracking in the same conference unit.
- The chairman unit has the function of controlling the order of the meeting and having the priority to speak and can close other representative units that are speaking.
- The Chairman-specific mode allows the Delegates to request to speak.
- The Chairman can allow or deny through the Web application service screen.
- Super anti-interference feature effectively eliminates the signal interference of mobile phones, radio waves, Bluetooth, WiFi, etc.

## Technical Specifications

Microphone	Chairman Unit	Delegate Unit
Priority Button	Yes	No
System capacity	20 units per channel	
Microphone type	Array type, 9.7mm gold-plated capsule	
Effective pickup distance	50~60cm	
Frequency response	30Hz to 20KHz	
SNR	>90dB	
Dynamic range	96dB	
Total harmonic distortion	<0.05%	
Microphone sensitivity	-37dB±2dB	
Operating voltage	24V DC± 5%	
Operating current	60mA ± 5%	
Connection method	T shape connector; junction box; loop in loop out	
Connector	8PIN/RJ45	
Unit opening quantity	1/2/3/4/5/6/7/8/9 or all	
Number function	Support customize the ID number	
Power consumption	2W	
Equivalent noise	20dBA (SPL)	
Maximum SPL	136dB (THD<3%)	
Headphone output interface	ø3.5mm stereo jack	
Headphone load	> 16Ω	
Volume of the headset	10mW	
Number of Chairman	Max 150	
Number of VIP	Max 150	
Display	128'32 high brightness OLED screen	
Color	Black	
Weight	2.8Kg	
Panel size	165x58x5mm	
Hole size	149x48x300mm	

AVAILABLE THROUGH PAN INDIA DISTRIBUTOR & DEALER NETWORK



[www.atdscindia.com](http://www.atdscindia.com)

**ELITE**  
SERIES